



Specifications

Introduction

REFLOMAX GLODIANTM DOT-C2 is intended for safety marking tape for trucks and trailers with rigid surfaces to use for the sides and rear of all kind of vehicles. It provides excellent reflectivity which enhances night time safety and it is designed for easy application and durability. GlodianTM DOT-C2 gives perfect solution for various types of trucks or trailer with both metalized and sealed(air-backed) surface. Also it has the DOT-C2 certification mark which complies with FMVSS108. REFLOMAX GLODIANTM DOT-C2 may help reduce accidents and prevent injuries.

Composition

REFLOMAX GLODIANTM DOT-C2 rigid grade is composed of cube corners(retroreflective microprism). It is formed by hard polymer on flexible, UV-stabilized polymeric film to which applied edge sealed technology.

Special Features:

- Provides Edge seal for air-backed tape
- Provides outstanding reflectivity at dawn, dusk, night and day
- Custom logos available to build brand identity strong
- Kiss-cut & Pre-cut Available
- All side sealed technology applied for Kiss-cut & Pre-cut product to prevent water/dust/chemical substances penetration.
- Providing 10 years of field performance

Retro-reflectivity

The coefficients of retroreflection(R_A) shall be determined in accordance with ASTM E810, and per ASTM E810 the values of all rotation are determined the R_A .

The values as shown in below Table 1 are minimum coefficients of retroreflection expressed in candelas per lux per squaremeter (cd/lux/m²)

Table 1 Minimum Coefficient of Retroreflection (R_A)

COLOR	Observation Angles	Entrance Angles	R_A
White	0.2°	-4°	250
		30°	250
		40°	60
	0.5°	-4°	65
		30°	65
		40°	15
Red	0.2°	-4°	60
		30°	60
		40°	15
	0.5°	-4°	10
		30°	10
		40°	4



Color

REFLOMAX GLODIAN™ DOT-C2 rigid grade is printed in white/red pattern(6"/6",7"/11") The color complies with the requirements of FMVSS108 standard.

COLOR	Type	Item Code
Red 6 inch / White 6 inch(Alternating Pattern)	Air-backed	VC-6H
Red 11 inch / White 7 inch(Alternating Pattern)	Air-backed	VC-7H
Red 6 inch / White 6 inch(Alternating Pattern)	Metalized	VC-6M
Red 11 inch / White 7 inch(Alternating Pattern)	Metalized	VC-7M

Physical Properties

The following technical data should be considered typically only and should not be used for the pupose of specification.

PROPERTY	FMVSS 108 Requirement	REFLOMAX GLODIAN™ DOT-C2 Typical Value
Thickness	NA	Air-backed Type : 405~445m / Metalized Type : 300~340m
Gloss ASTM D523 @65°	NA	100
Dimensional Stability ASTM D4956	Less than 1/8" change on 9x9" panel	Pass
Flexibility Wrap around 0.125" mandrel@32°F(0°C)	No Cracking	Pass
Min. Application Temperature	NA	Pass
High Pressure Wash Test 45°angle, 1200psi, 8" distance	NA	15°C(60°F)
Adhesion 90° Hanging Weight ASTM D4956	Less than 2" movement	Pass
Peel Adhesion 12 inch/minute, 180° peel angle	NA	Pass
Chemical Resistance	NA	Degreased aluminum : 0.94kg/cm
Corrosion Resistance ASTM B-117 5% Salt spray for 1,000hours	NA	No effect
Impact Resistance Room Temperature 100in-lb, 5/8 inch tip	No damage outside impact	Pass
Impact Resistance Cold tehrmerature 60in-lb, 5/8 inch tip at -20°C(68°F)	No damage outside impact	Pass

Photometrics

REFLOMAX GLODIAN™ DOT-C2 conspicuity tape series meet the applicable daytime color requirements for FMVSS 108, DOT-C2 and ASTM D4956:2013

The four pairs of chromaticity coordinates determine the acceptable color in respect of the CIE 1931 Standard Colorimetric System measured with CIE Standard illuminant D65.

COLOR	Chromaticity Coordinates*								Daytime	
	1		2		3		4		Min	Max
	x	y	x	y	x	y	x	y		
White	0.303	0.300	0.368	0.366	0.340	0.393	0.274	0.329	27	--
Red	0.648	0.351	0.735	0.265	0.629	0.281	0.565	0.346	2.5	15



76, Pureundeulpan-ro, 1010beongil,
Paltan-myeon, Hwaseong-si,
Gyeonggi-do, 18525, Rep. of Korea



TEL +82 (0)31-8014-9724
FAX +82 (0)31-8059-2130



www.reflomax.com

Application Instruction

REFLOMAX GLODIAN™ DOT-C2 is applicable to truck and trailers. In order to ensure the fine adhesion between tape and the clean substrate, it must be installed at the temperature between 15°C and 38°C(64°F~100°F).

Before installation, all surfaces must be considered contamination, and must be cleaned prior to application. Wash the surface with detergent and water to remove dirt and road film. Use a clean cloth with isopropyl alcohol to wipe the surface in one direction to avoid spreading contamination. Freshly painted surfaces should be dried for at least 3 weeks and completely cured. The compatibility of the selected lacquer with the paint must be checked by the user before using the material. Self-adhesive reflective materials shall be used only for dry applications. If the tensile strength of the material is low, the removal of the reflective film may be more difficult. After that immediately dry surface with a clean absorbant paper towel for fine quality of adhesion.

Installation

- ① Clear surface properly
- ② Do not overlap marking.
- ③ Apply the material only on flat surface.
- ④ Ensure that the tape is applied without tension.
- ⑤ Installing underneath belts or buckles is not recommended.

Shelf Life

Store in a cool dry place, store at room temperature 18°~25°C (64°F~77°F) and 30%~50% R.H. And the product should be used within one (1) year after arrival date. Store rolls in their original cartons.

Size & Package

- **Product Size** 50mm(2") x 50YD per 1roll as standard.
- **Package** 430mm x 410mm x 260mm per 1carton (includes 16rolls)
- **Gross Weight** About 19kgs(42LBs) per 1carton.

Maintenance

Regular cleaning is recommended for maximum performance. The following cleaning methods are recommended.

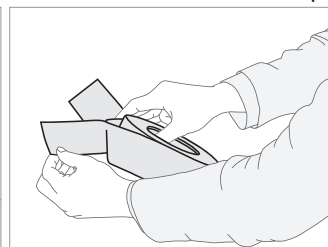
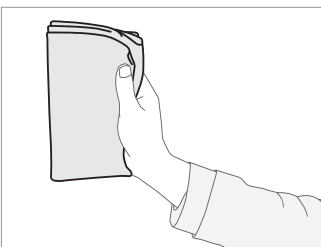
- 1) Wash with sponge, cloth or soft brush with water and detergent.
- 2) Automatic truck/trailer wash or standard high-pressure hand spray:
 - Maximum Pressure : 1,200psi
 - Maximum wash temperature : 60°C(140°F)
 - Water jets must be a minimum of 30.48cm(12") from the conspicuity tape
 - Spray water jets at no greater angle than 45°

How to install

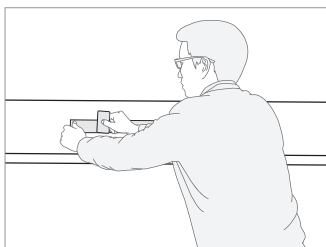
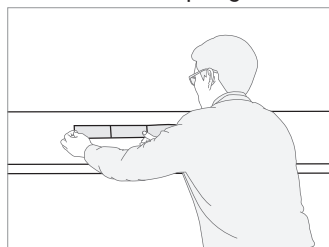
① Clean the area where the tape is to be attached



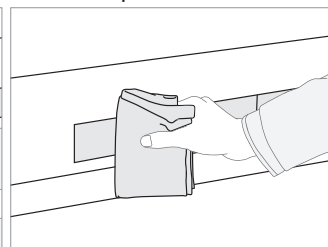
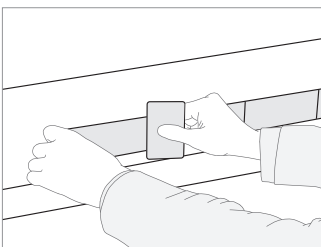
② Remove the release film and attach tape



③ Use a card or squeegee to attach the entire surface



④ Clean/wipe the surface





76, Pureundeulpan-ro, 1010beongil,
Paltan-myeon, Hwaseong-si,
Gyeonggi-do, 18525, Rep. of Korea



TEL +82 (0)31-8014-9724
FAX +82 (0)31-8059-2130



www.reflomax.com



Important

GENERAL PERFORMANCE CONSIDERSTIONS

Durability can be reduced if recommended techniques are not followed:

- Failure to cut markings around rivets, seams and body panels.
- Improper use of high pressure cleaning
- Spillage of chemicals or solvents.
- Improper application or surface preparation.

Save the limited remedies stated above, and except where prohibited by law, Reflomax will not be liable for any loss or damage arising from any Reflomax product, whether direct, indirect, special, incidental or consequential damages (including but not limited to lost profits, busienss or revenue in any way), regardless of the legal theory asserted including warranty, contract, negligence or strict liability.

Warranty

REFLOMAX GLODIAN™ DOT-C2 series("Product") are warrrnted to be free of defects in materials and workmanship at the time of shipment, and to meet the specifications stated in this product data. If the Product is proven not to have met the Warranty on its shipment date, then a buyer's exclusive remedy, and Reflomax's sole obligation, at Reflomax's option, will be a refund or replacement of the Product.

Users must determine the suitability of the product for its intended use before use. And user must assume all risks and responsibilities in this regard. All questions of warranty and liability claims relating to this product are subject to the terms of the business and sales where are aplicable to the prevailing law.

No warranty is given for the purpose other than those listed in the Specifications Sheet, or for purposes not handled in compliance with Reflomax's processing and handling instructions. The durability of the product may depend on manyfactors such as recom-mended application guidelines, geographical areas, exposure conditions, and product maintenance and completion indicators. Reflomax is not responsible for defective product due to improper surface treatment. For further information, please see the full warranty instrument available at www.reflomax.com.

GLODIAN™ is registered trademark of REFLOMAX CO., LTD.